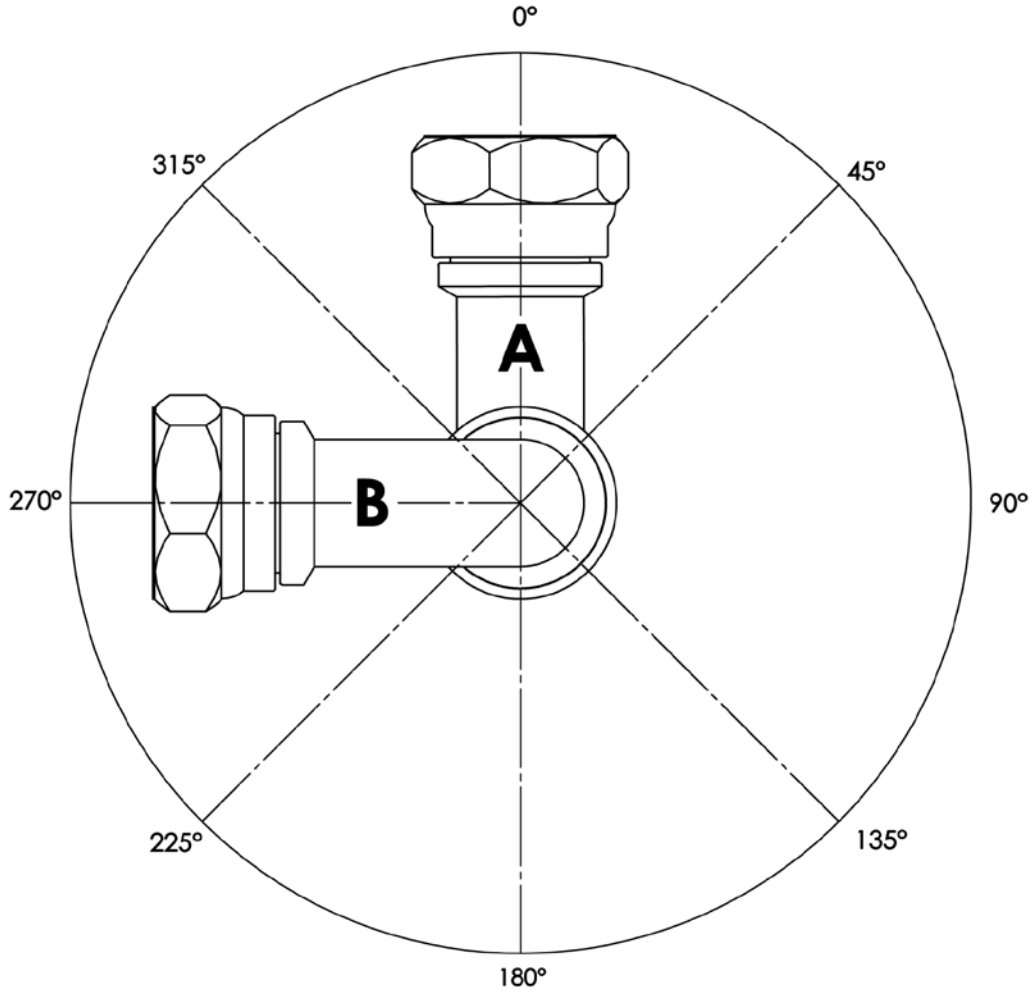


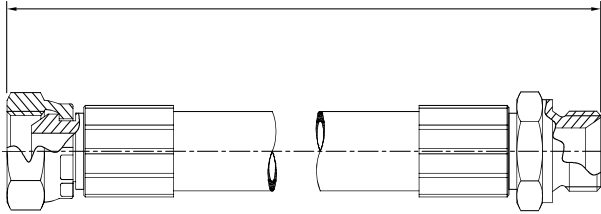
## HOW TO MEASURE FITTING ORIENTATION



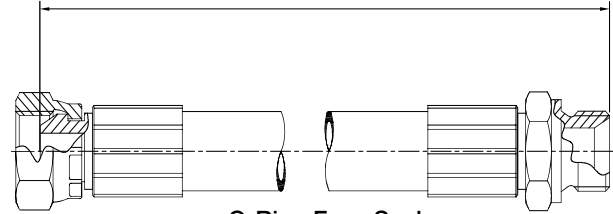
Orientation is determined by the number of degrees measured in a clockwise direction between the farthest fitting and the nearest fitting.

## DEFINING HOSE ASSEMBLY LENGTH

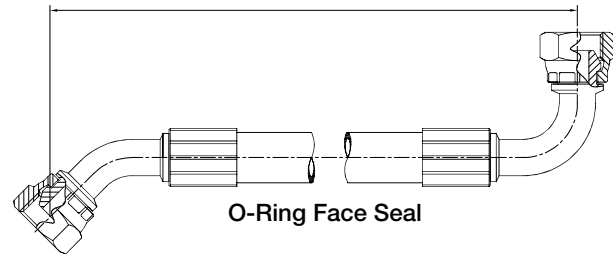
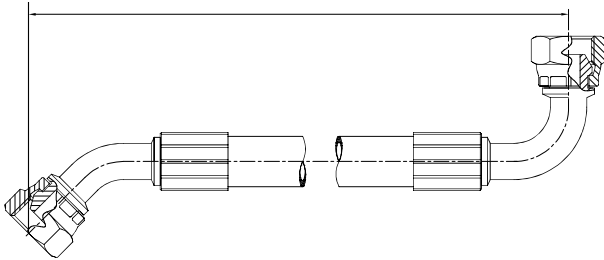
### 1. Overall Length (OAL)



### 2. Seat to Seat Length (SSL)

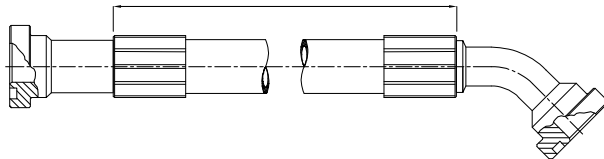


O-Ring Face Seal



O-Ring Face Seal

### 3. Hose Cut Length (CL)



## TOLERANCE FOR ASSEMBLED HOSES

Hose Length (in)	Tolerance (+/- in)	Hose Length (mm)	Tolerance (+/- mm)
0 to 12"	0.13 (1/8")	0 - 304.8 mm	3.2
12" to 18"	0.19 (3/16")	304.8 - 457.2 mm	4.8
Over 18" to 36"	0.25 (1/4")	457.2 - 914.4 mm	6.4
Over 36"	1%	Over 914.4 mm	1%

BECAUSE WE CONTINUALLY EXAMINE WAYS TO IMPROVE OUR PRODUCTS, WE RESERVE THE RIGHT TO ALTER SPECIFICATIONS WITHOUT NOTICE.